



SOCCKER 2024

SOCCKER 2024



**HIGH 5
FIVE**

ASB 2024

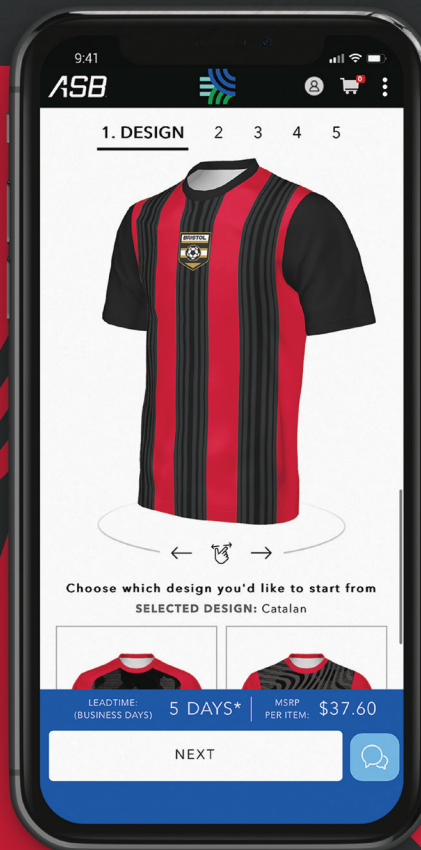
YOUR KIT YOUR WAY



 **FreeStyle**[™]
SUBLIMATION



**Go Full
Custom**
or Go Fast
with  **Turbo**





LINE UP

Elite Soccer	7
FreeStyle Sublimation	11
Stock Jerseys	15
Shorts	27
Ladies Elite Soccer	31
Ladies FreeStyle Sublimation	35
Ladies Stock Jerseys	37
Warm-Ups	41
Socks	47
Bags	49
Training	51

ICONS

color secure®

color secure® technology helps prevent dye migration



Dry-Excel™

Moisture evaporation and wicking fabric



Moisture Management

Fabric wicks moisture away keeping the body cool & dry



Odor Resistant

Odor Resistant technology keeps garments fresher longer



4-Way Stretch

Stretch properties allow for increased mobility



UPF

Garment protects against harmful UV rays



Water Resistant

Resists rain & water to keep the body protected & dry





**STAY
MATCH
DAY
COOL**

POWERED BY coolcore®

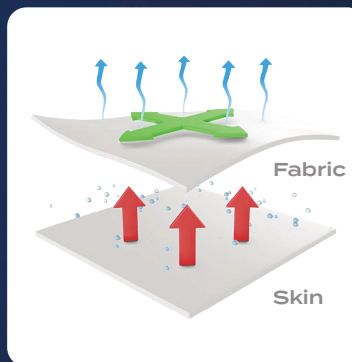
Coolcore® fabric is engineered to distribute moisture quickly throughout the garment.

As the moisture spreads it dries faster to keep you cool and comfortable all match long while providing UPF 50 sun protection.

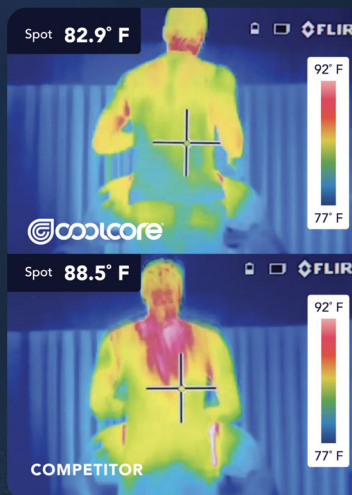
Regulated
Evaporation

360° Moisture
Transportation

Moisture
Wicking



Patented Fabric
Technology



Technology Comparison

The same athlete after
20 minutes of activity

Explore
Elite Soccer

POWERED BY
coolcore®



321550
pg. 7



321555
pg. 9



321560
pg. 9



325460
pg. 7



321552
pg. 31



321557
pg. 33



321562
pg. 33



325462
pg. 31



321550
Elite Horizontal



321550
Elite Lightning

321560
pg. 9
Elite Block

325460



For available design lines visit augustasportswear.com/sublimation

FREESTYLE SUBLIMATED ELITE JERSEY

321550	Adult	S-2XL	MSRP 55.10
321551	Youth	XXS-L	MSRP 55.10

- 87% polyester/13% spandex with Coolcore® fabric technology
- 92% polyester/8% spandex mesh shoulder & back inserts with Coolcore® fabric technology
- Garment protects against the sun with 50+ UPF
- Tag-free label
- Two piece collar
- Set-in sleeves

COORDINATING LADIES | **321552** pg. 31



Faded Chevron



Goal Kick



COORDINATING LADIES | **325462** pg. 31

PLAY90 SHORTS POWERED BY COOLCORE®

325460	Adult	S-3XL	MSRP 22.70
325461	Youth	S-XL	MSRP 22.70

- 88% polyester/12% elastane Coolcore® fabric with color secure® technology that helps prevent dye migration
- Garment protects against the sun with 50+ UPF
- Tag-free label
- Covered elastic waistband with inside drawcord
- 7-inch inseam
- Youth inseam graded



BLACK 080 GRAPHITE 059 NAVY 065 ROYAL 060 WHITE 005 SCARLET 083



321550
Elite
Vertical

325460





321555
Elite Horizontal*



321555
Elite Block

◀ *Perfect for
Goalkeeper
Option*

321560
Elite Block

321560
Elite Block



For available design lines visit
augustasportswear.com/sublimation

NEW

FREESTYLE SUBLIMATED ELITE LONG SLEEVE JERSEY

321555	Adult	S-2XL	MSRP 63.30
321556	Youth	XXS-L	MSRP 63.30

- 87% polyester/13% spandex with Coolcore® fabric technology
- 92% polyester/8% spandex mesh shoulder & back inserts with Coolcore® fabric technology
- Garment protects against the sun with 50+ UPF
- Tag-free label
- Two piece collar
- Set-in sleeves

COORDINATING LADIES | **321557** pg. 33



Optic



Gradient



FREESTYLE SUBLIMATED ELITE 7" SHORTS

321560	Adult	S-2XL	MSRP 47.20
321561	Youth	XXS-L	MSRP 47.20

- 87% polyester/13% spandex with Coolcore® fabric technology
- Garment protects against the sun with 50+ UPF
- Tag-free label
- Covered elastic waistband with inside drawcord
- 7-inch inseam
- Youth inseam graded

COORDINATING LADIES | **321562** pg. 33



Optic Stripe



Faded Chevron

321555
Elite
Block



321560
Elite
Block





FULLY
REVERSIBLE



321530
Clean
Sheet



For available design lines visit
augustasportswear.com/sublimation



**FREESTYLE SUBLIMATED
 REVERSIBLE V-NECK JERSEY**

321530 Adult S-2XL MSRP 68.60

321531 Youth S-L MSRP 68.60

- 100% polyester single ply reversible closed hole mesh
- Garment protects against the sun with 50+ UPF
- Tear away label
- Set-in sleeves



Whirlwind



Optic



Peru



Center Stripe Fade

321520
**Faded
Chevron**



321810
**Faded
Chevron**

321510
Catalan



321810
**Twin
Stripe**



For available design lines visit
augustasportswear.com/sublimation



FREESTYLE SUBLIMATED TURBO V-NECK JERSEY

321520 Adult S-2XL MSRP 36.00
322520 Youth S-L MSRP 36.00

- 100% polyester wicking knit
- Garment protects against the sun with 50+ UPF
- Tag-free label
- Raglan sleeves



Clean Sheet



Whirlwind



Optic



FREESTYLE SUBLIMATED TURBO CREW NECK SOCCER JERSEY

321510 Adult S-2XL MSRP 36.00
322510 Youth S-XL MSRP 36.00

- 100% polyester wicking knit
- Garment protects against the sun with 50+ UPF
- Tag-free label
- Set-in sleeves



Center Stripe Fade



Clean Sheet



Gradient



FREESTYLE SUBLIMATED TURBO SOCCER SHORTS

321810 Adult S-2XL MSRP 42.30
326810 Youth S-L MSRP 42.30

- 100% polyester wicking smooth knit
- Garment protects against the sun with 50+ UPF
- Tag-free label
- Covered elastic waistband with inside drawcord
- 7-inch inseam
- Youth inseam graded



Center Stripe Fade



Clean Sheet



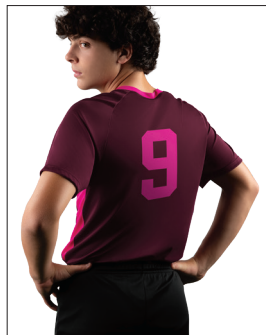
Optic Stripe





NEW





Back



MADRID JERSEY

NEW

322240 Adult S-2XL MSRP 15.00
322241 Youth XXS-L MSRP 15.00

- 100% polyester wicking knit with color secure® technology that helps prevent dye migration
- Tag-free label
- Low profile tapered collar
- Raglan sleeves



BLACK/WHITE 420
 COLUMBIA BLUE/WHITE 293
 DK GREEN/LIME 838
 DK GREEN/WHITE 438
 ELECTRIC YELLOW/BLACK 78N



LIME/WHITE 693
 MAROON/POWER PINK 829
 MAROON/WHITE 245
 NAVY/POWER BLUE 888
 ORANGE/WHITE 320



POWER BLUE/WHITE 834
 POWER PINK/WHITE 468
 PURPLE/WHITE 450
 ROYAL/GOLD 281
 ROYAL/WHITE 280



SCARLET/BLACK 406
 SILVER/BLACK 098
 TEAL/WHITE 331
 VEGAS GOLD/WHITE 250
 WHITE/BLACK 226





Back

COORDINATING LADIES | 322922 pg. 37



NEW

HAWK EVOLUTION JERSEY

322990 Adult S-3XL MSRP 20.60
322991 Youth S-XL MSRP 20.60

- 100% polyester wicking knit with color secure® technology that helps prevent dye migration
- 90% polyester/10% spandex wicking mesh inserts with color secure® technology
- Tag-free label
- Low profile tapered collar
- Raglan sleeves
- Side vent detail



BLACK/WHITE 420
 COL BLUE/BLACK 292
 DK GREEN/WHITE 438
 GOLD/WHITE 245
 GRAPHITE/WHITE R04



KELLY/BLACK 342
 MAROON/WHITE 380
 NAVY/LIME 666
 NAVY/WHITE 301
 ORANGE/WHITE 320



POWER BLUE/WHITE 834
 POWER ORANGE/BLACK Y59
 POWER YELLOW/BLACK 457
 PURPLE/WHITE 450
 ROYAL/GOLD 281



ROYAL/WHITE 280
 SCARLET/WHITE 408
 SILVER/BLACK 098
 WHITE 005
 TEAL/BLACK 435





Back



SHEFFIELD JERSEY

322970 Adult S-3XL MSRP 18.40
322971 Youth XXS-L MSRP 18.40

- 100% polyester wicking knit with color secure® technology that helps prevent dye migration
- Tag-free label
- Raglan sleeves



BLACK/WHITE 420
 COLUMBIA BLUE/WHITE 293
 DARK GREEN/WHITE 438
 ELECTRIC ORANGE/BLACK 81N
 ELECTRIC YELLOW/BLACK 78N



GRAPHITE/WHITE R04
 KELLY/BLACK 342
 LIME/BLACK 530
 MAROON/WHITE 380
 NAVY/LIME 66G



NAVY/WHITE 301
 ORANGE/WHITE 320
 PURPLE/WHITE 450
 POWER BLUE/BLACK 81B
 ROYAL/GOLD 281



ROYAL/WHITE 280
 SCARLET/BLACK 406
 SCARLET/WHITE 408
 WHITE 005
 VEGAS GOLD/BLACK 252





WEMBLEY JERSEY

322930	Adult	S-2XL	MSRP 19.60
322931	Youth	XS-L	MSRP 19.60

- 100% polyester wicking knit with color secure® technology that helps prevent dye migration
- Tag-free label
- Two piece collar
- Set-in sleeves



ATHLETIC GOLD/ WHITE/ BLACK 661	BLACK/ GRAPHITE/ WHITE 489	COLUMBIA BLUE/ WHITE/ NAVY 533	FOREST/ BLACK/ WHITE 148	GRAPHITE/ BLACK/ WHITE U73	KELLY/ WHITE/ BLACK 609
---	-------------------------------------	--	-----------------------------------	-------------------------------------	----------------------------------



LIME/ WHITE/ BLACK 652	LIME/ WHITE/ NAVY 694	MAROON/ WHITE/ BLACK 162	NAVY/ WHITE/ GRAPHITE 372	ORANGE/ BLACK/ WHITE 322	POWER BLUE/ BLACK/ WHITE 837
---------------------------------	--------------------------------	-----------------------------------	------------------------------------	-----------------------------------	--



POWER YELLOW/ BLACK/ WHITE 458	PURPLE/ BLACK/ WHITE 497	ROYAL/ WHITE/ ATHLETIC GOLD Y80	ROYAL/ WHITE/ BLACK 150	SCARLET/ WHITE/ BLACK 588	SCARLET/ NAVY/ WHITE 656
--	-----------------------------------	---	----------------------------------	------------------------------------	-----------------------------------



WHITE/ BLACK/ GRAPHITE X26	VEGAS GOLD/ WHITE/ BLACK 605
-------------------------------------	--



COORDINATING LADIES/GIRLS | 6915/6916 pg. 38



CUTTER+ V-NECK JERSEY

6907	Adult	S-3XL	MSRP 20.60
6908	Youth	S-XL	MSRP 20.60

- 96% polyester/4% spandex lightweight knit with color secure® technology that helps prevent dye migration
- Garment protects against the sun with 50+ UPF
- Tearaway label
- Raglan sleeves



Back



BLACK/GOLD 421 BLACK/SCARLET 500 BLACK/WHITE 420 COLUMBIA BLUE/WHITE 293 DARK GREEN/WHITE 438 GOLD/WHITE 245



GRAPHITE/WHITE R04 LIME/ROYAL O3W MAROON/WHITE 380 NAVY/SCARLET S20 NAVY/WHITE 301 ORANGE/BLACK 321



ORANGE/WHITE 320 PURPLE/WHITE 450 ROYAL/SCARLET W81 ROYAL/WHITE 280 SCARLET/BLACK 406 SCARLET/WHITE 408



VEGAS GOLD/BLACK 252 WHITE/BLACK 226 WHITE/NAVY 221 WHITE/ROYAL 220 WHITE/SCARLET 235



COORDINATING LADIES/GIRLS | 1522/1523 pg. 39



CUTTER JERSEY

1517	Adult	S-3XL	MSRP 16.40
1518	Youth	XXS-XL	MSRP 16.40

- 100% polyester wicking knit with color secure® technology that helps prevent dye migration
- 92% polyester/8% spandex wicking pinhole mesh underarms
- Tag-free label
- Raglan sleeves
- Longer length



Back



WHITE/ ROYAL 220	DARK GREEN/ WHITE 438	COLUMBIA BLUE/ NAVY 294	KELLY/ BLACK 342	POWER YELLOW/ BLACK 457	ATHLETIC GOLD/ WHITE 596	LIME/ WHITE 693
------------------------	--------------------------------	----------------------------------	------------------------	----------------------------------	-----------------------------------	-----------------------



POWER BLUE/ WHITE 834	POWER ORANGE/ BLACK Y59	GRAPHITE/ WHITE R04	BLACK/ GOLD 421	BLACK/ WHITE 420	MAROON/ WHITE 380	NAVY/ WHITE 301
--------------------------------	----------------------------------	---------------------------	-----------------------	------------------------	-------------------------	-----------------------



ORANGE/ WHITE 320	PURPLE/ WHITE 450	RED/ BLACK 407	RED/ WHITE 400	ROYAL/ ORANGE 284	ROYAL/ WHITE 280	VEGAS GOLD/ WHITE 250
-------------------------	-------------------------	----------------------	----------------------	-------------------------	------------------------	--------------------------------



WHITE/ BLACK 226	WHITE/ NAVY 221	WHITE/ RED 225	WHITE/ WHITE 230
------------------------	-----------------------	----------------------	------------------------

NFHS WHITE OPTION
THE SOLID WHITE JERSEY IS NFHS AWAY TEAM UNIFORM COMPLIANT WHEN PAIRED WITH ANY WHITE SOCK



Back



SHORT SLEEVE MESH REVERSIBLE JERSEY

1602	Adult	S-2XL	MSRP 19.60
1603	Youth	XXS-XL	MSRP 19.60

- Two layers of 100% polyester sports mesh body with color secure® technology that helps prevent dye migration
- 100% polyester wicking smooth knit collar with color secure® technology
- Tear away label
- Fully reversible for wearing on either side
- Set-in sleeves
- Each layer hemmed separately for easy embellishment



BLACK/
SCARLET
500

BLACK/
WHITE
420

DARK
GREEN/
WHITE
438

KELLY/
WHITE
340



MAROON/
WHITE
380

NAVY/
WHITE
301

ORANGE/
WHITE
320



ROYAL/
GOLD
281

ROYAL/
WHITE
280

SCARLET/
WHITE
408

1851



7-inch
inseam
(Youth
inseam
graded)

5-inch
inseam

Ladies Fit



**PLAY90 SHORTS
POWERED BY COOLCORE®**

NEW

325460	Adult	S-3XL	MSRP 22.70
325461	Youth	S-XL	MSRP 22.70
325462	Ladies	XS-2XL	MSRP 22.70

- 88% polyester/12% elastane Coolcore® fabric with color secure® technology that helps prevent dye migration
- Garment protects against the sun with 50+ UPF
- Tag-free label
- Covered elastic waistband with inside drawcord



BLACK
080

GRAPHITE
059

NAVY
065



ROYAL
060

SCARLET
083

WHITE
005



7-inch
inseam
(Youth
inseam
graded)

Ladies Fit

7-inch
inseam



OCTANE SHORTS

1425	Adult	S-3XL	MSRP 8.40
1426	Youth	XXS-L	MSRP 8.40
1423	Ladies	S-2XL	MSRP 8.40

- 100% polyester wicking knit
- Full-cut
- Tag-free label
- Covered elastic waistband with inside drawcord



BLACK
080

DARK
GREEN
035

GRAPHITE
059

MAROON *
045



NAVY
065

RED
040

ROYAL
060

SILVER
099

SILVER
GREY
016

AVAILABLE IN
LADIES ONLY



COLUMBIA
BLUE
089

GOLD
025

KELLY
030

ORANGE
029

PURPLE *
050

AVAILABLE IN ADULT/YOUTH ONLY

* Maroon & Purple shades can vary by brand, please contact our Customer Care with questions



6-inch
inseam



PRIMO 2.0 SHORTS

NEW

325934 Adult S-2XL MSRP 15.20

- 100% polyester wicking knit
- 100% Coolmax™ lining on white
- Tag-free label
- Covered elastic waistband



BLACK
080



NAVY
065



ROYAL
060



SCARLET
083



WHITE
005



7-inch
inseam
(Youth
inseam
graded)



PRIMO SHORTS

325390 Adult S-2XL MSRP 15.20

325391 Youth XXS-L MSRP 15.20

- 100% polyester wicking knit
- 100% Coolmax™ lining on white
- Tag-free label
- Covered elastic waistband with inside drawcord



BLACK
080



NAVY
065



ROYAL
060



SCARLET
083



WHITE
005



321552
Elite Horizontal

321562
pg. 35
Elite Block



321552
Elite Horizontal

325462



For available design lines visit augustasportswear.com/sublimation

LADIES FREESTYLE SUBLIMATED ELITE JERSEY

321552 Ladies XS-2XL MSRP 55.10

- 87% polyester/13% spandex with Coolcore® fabric technology
- 92% polyester/8% spandex mesh shoulder & back inserts with Coolcore® fabric technology
- Garment protects against the sun with 50+ UPF
- Tag-free label
- Two piece collar
- Set-in sleeves

COORDINATING ADULT/YOUTH
321550/321551 pg. 7



Peru



Corner Kick



COORDINATING ADULT/YOUTH
325460/325461 pg. 7

NEW

LADIES PLAY90 SHORTS POWERED BY COOLCORE®

325462 Ladies XS-2XL MSRP 22.70

- 88% polyester/12% elastane Coolcore® fabric with color secure® technology that helps prevent dye migration
- Garment protects against the sun with 50+ UPF
- Tag-free label
- Covered elastic waistband with inside drawcord
- 5-inch inseam



BLACK
080

GRAPHITE
059

NAVY
065

ROYAL
060

WHITE
005

SCARLET
083



321552
Elite
Vertical

325462





321557
Elite Vertical

325462
pg. 33



321557
Elite Horizontal

321562
Elite Block



For available design lines visit
augustasportswear.com/sublimation



NEW

**LADIES FREESTYLE SUBLIMATED
 ELITE LONG SLEEVE JERSEY**

321557 Ladies XS-2XL MSRP 63.30

- 87% polyester/13% spandex with Coolcore® fabric technology
- 92% polyester/8% spandex mesh shoulder & back inserts with Coolcore® technology
- Garment protects against the sun with 50+ UPF
- Tag-free label
- Two piece collar
- Set-in sleeves

COORDINATING ADULT/YOUTH
321555/321556 pg. 9



Gradient



Elite Block



**LADIES FREESTYLE
 SUBLIMATED ELITE 5" SHORTS**

321562 Ladies XS-2XL MSRP 47.20

- 87% polyester/13% spandex elastane with Coolcore® fabric technology
- Garment protects against the sun with 50+ UPF
- Tag-free label
- Covered elastic waistband with inside drawcord
- 5-inch inseam

COORDINATING ADULT/YOUTH
321560/321561 pg. 9



Optic Stripe



Z Stripe



**321557
 Elite
 Lightning**

**321562
 Elite Block**





321522
Diamond
Fade



321812
Diamond
Fade

321522
Peru



321812
Twin
Stripe



For available design lines visit
augustasportswear.com/sublimation



LADIES FREESTYLE TURBO SUBLIMATED V-NECK JERSEY

321522 Ladies S-2XL MSRP 36.00

- 100% polyester smooth wicking knit
- Garment protects against the sun with 50+ UPF
- Tag-free label
- Raglan sleeves



Catalan



Z-Stripe



Optic



Clean Sheet



Whirlwind



Center Stripe



LADIES FREESTYLE TURBO SUBLIMATED SHORTS

321812 Ladies S-2XL MSRP 42.30

- 100% polyester wicking smooth knit
- Garment protects against the sun with 50+ UPF
- Tag-free label
- Covered elastic waistband with inside drawcord
- 5-inch inseam



Clean Sheet



Whirlwind



Center Stripe



HAWK EVOLUTION



Back

COORDINATING ADULT/YOUTH
322990/322991 pg. 17



NEW

LADIES HAWK EVOLUTION JERSEY

322992 Ladies XS-2XL MSRP 20.60

- 100% polyester wicking knit with color secure® technology that helps prevent dye migration
- 90% polyester/10% spandex wicking mesh inserts with color secure® technology
- Tag-free label
- Low profile tapered collar
- Raglan sleeves
- Side vent detail



BLACK/WHITE 420
COL BLUE/BLACK 292
DK GREEN/WHITE 438
GOLD/WHITE 245
GRAPHITE/WHITE R04



KELLY/BLACK 342
MAROON/WHITE 380
NAVY/LIME 666
NAVY/WHITE 301
ORANGE/WHITE 320



POWER BLUE/WHITE 834
POWER ORANGE/BLACK Y59
POWER YELLOW/BLACK 457
PURPLE/WHITE 450
ROYAL/GOLD 281



ROYAL/WHITE 280
SCARLET/WHITE 408
SILVER/BLACK 098
WHITE 005
TEAL/BLACK 435

LADIES STOCK JERSEYS



COORDINATING ADULT/YOUTH
6907/6908 pg. 23



LADIES CUTTER+ V-NECK JERSEY

6915	Ladies	XS-2XL	MSRP 20.60
6916	Girls	S-L	MSRP 20.60

- 96% polyester/4% spandex lightweight knit with color secure® technology that helps prevent dye migration
- Garment protects against the sun with 50+ UPF
- Tearaway label
- Raglan sleeves



BLACK/
WHITE
420

COLUMBIA
BLUE/
WHITE
293

DARK
GREEN/
WHITE
438

GOLD/
WHITE
245

GRAPHITE/
WHITE
R04

LIME/
ROYAL
O3W



MAROON/
WHITE
380

NAVY/
WHITE
301

ORANGE/
WHITE
320

PURPLE/
WHITE
450

ROYAL/
WHITE
280

SCARLET/
WHITE
408



TEAL/
WHITE
331

VEGAS
GOLD/
WHITE
250

WHITE/
BLACK
226

WHITE/
ROYAL
220

WHITE/
SCARLET
235

WHITE
005

CUTTER



COORDINATING ADULT/YOUTH
1517/1518 pg. 25



LADIES CUTTER JERSEY

1522	Ladies	S-2XL	MSRP 16.40
1523	Girls	S-L	MSRP 16.40

- 100% polyester wicking knit with color secure® technology that helps prevent dye migration
- 92% polyester/8% spandex wicking pinhole mesh underarms
- Tag-free label
- Raglan sleeves
- Contoured bottom



BLACK/GOLD 421
BLACK/WHITE 420
DARK GREEN/WHITE 438
MAROON/WHITE 380
NAVY/WHITE 301
ORANGE/WHITE 320



POWER PINK/WHITE 468
PURPLE/WHITE 450
ROYAL/ORANGE 284
ROYAL/WHITE 280
RED/BLACK 407
RED/WHITE 400



VEGAS GOLD/WHITE 250
WHITE/BLACK 226
WHITE/NAVY 221
WHITE/RED 225
WHITE/ROYAL 220



229579

229431

229580

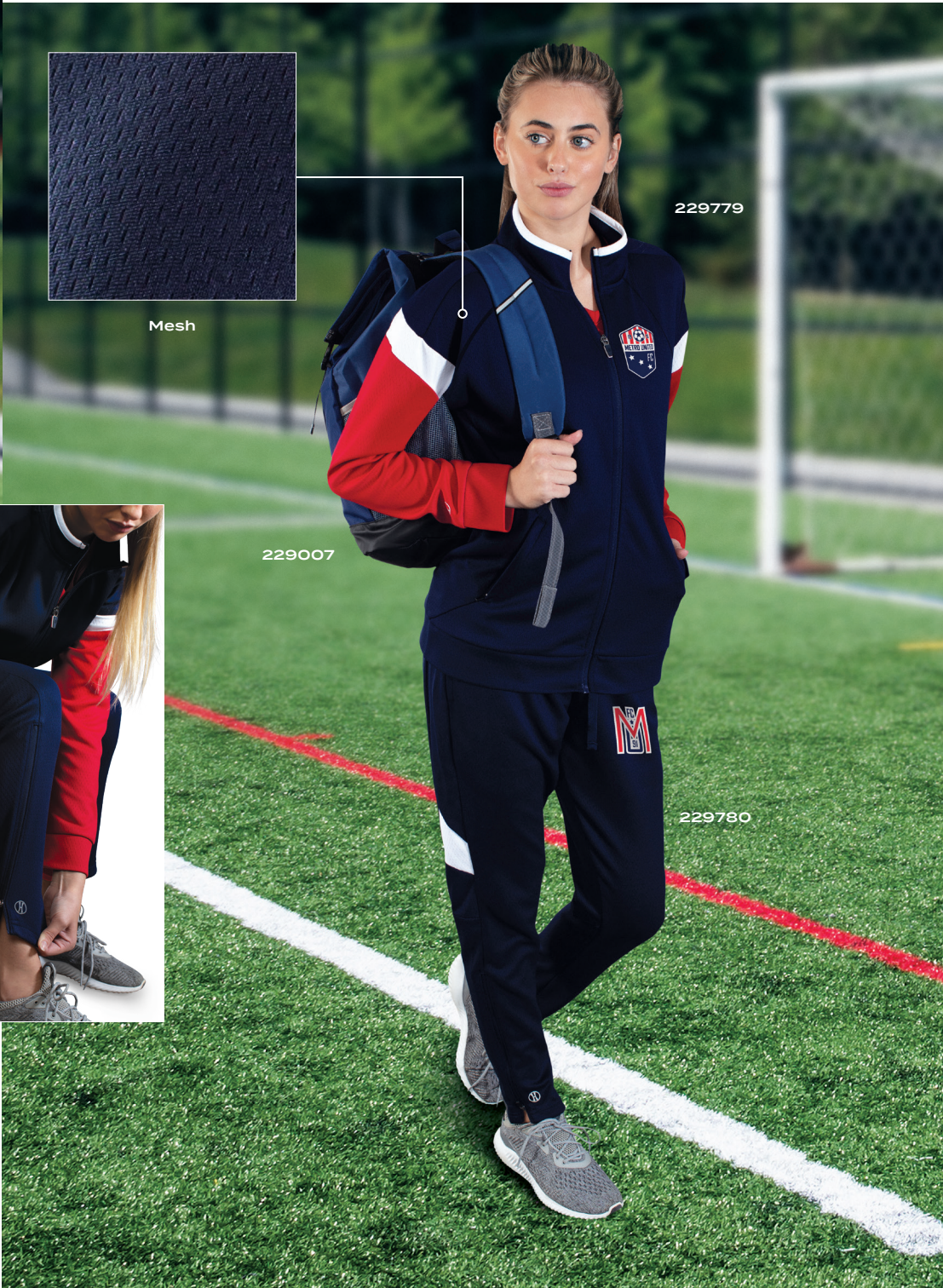
COORDINATING HOODIE
222584



Mesh



Zippered leg



229779

229007

229780



Ladies Fit



Zipper on Outside Lower Leg



LIMITLESS JACKET

229579	Adult	S-3XL	MSRP 51.80
229679	Youth	S-XL	MSRP 51.80
229779	Ladies	XS-2XL	MSRP 51.80

- Dry-Excel™ 100% polyester wicking double knit with mesh texture
- Ladies' fit on 229779
- Raglan sleeves
- Front zippered pockets



BLACK/WHITE 420 NAVY/WHITE 301 CARBON/WHITE F52 ROYAL/WHITE 280 SCARLET/WHITE 408 BLACK/BLACK 425 MAROON/WHITE 380



DARK GREEN/WHITE 438 BLACK/WHITE/GOLD 532 NAVY/WHITE/GOLD W57 BLACK/WHITE/ORANGE W12 BLACK/WHITE/SCARLET C39 NAVY/WHITE/SCARLET W53



LIMITLESS PANT

229580	Adult	S-3XL	MSRP 47.00
229680	Youth	S-XL	MSRP 47.00
229780	Ladies	XS-2XL	MSRP 47.00

- Dry-Excel™ 100% polyester wicking double knit mesh texture
- Pinhole micromesh back knee inserts
- Ladies' fit on 229780
- Covered elastic waistband with inside drawcord
- Side seam pockets
- Tapered leg
- Zipper on outside lower leg



BLACK/BLACK 425 BLACK/WHITE 420 CARBON/WHITE F52 DARK GREEN/WHITE 438 MAROON/WHITE 380 NAVY/WHITE 301 ROYAL/WHITE 280 SCARLET/WHITE 408



COORDINATING PULLOVER
229533/229633/229733



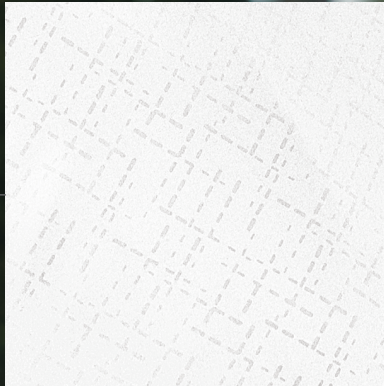
229528

229728

229431

229731

229531



Embossed Pattern Insert



Ladies Fit



SERIESX HOODED JACKET

229528	Adult	S-3XL	MSRP 70.10
229628	Youth	S-XL	MSRP 70.10
229728	Ladies	XS-2XL	MSRP 70.10

- Micron™ polyester is a lightweight, wind/water-resistant fabric
- 100% polyester micromesh lining
- Ladies' fit on 229728
- 3-piece hood with spandex binding
- Set-in sleeves
- Front zippered pockets
- Elastic cuffs
- Adjustable bottom hem with hidden shockcord closure in right pocket on Adult
- Alternate pants: 229095



BLACK/ WHITE 420	CARBON/ WHITE F52	NAVY/ WHITE 301	BLACK/ ORANGE 423	BLACK/ SCARLET 500	DARK GREEN/ WHITE 438	MAROON/ WHITE 380	NAVY/ SCARLET S20	ROYAL/ WHITE 280	SCARLET/ WHITE 408
------------------------	-------------------------	-----------------------	-------------------------	--------------------------	--------------------------------	-------------------------	-------------------------	------------------------	--------------------------



Zipper on
Outside
Lower Leg



SERIESX PANT

229531	Adult	S-3XL	MSRP 56.30
229631	Youth	S-XL	MSRP 56.30
229731	Ladies	XS-2XL	MSRP 56.30

- Micron™ polyester is a lightweight, wind/water-resistant fabric
- 100% polyester micromesh lining
- Ladies' fit on 229731
- Exposed brushed elastic waistband with inside drawcord
- Side seam pockets
- Tapered leg
- Articulated seaming at the knees
- Covered elastic cuff at leg opening
- Zipper on outside lower leg



BLACK 080	CARBON J96	NAVY O65	BLACK/ WHITE 420	ROYAL/ WHITE 280	SCARLET/ WHITE 408	DARK GREEN/ WHITE 438	MAROON/ WHITE 380
--------------	---------------	-------------	------------------------	------------------------	--------------------------	--------------------------------	-------------------------

Back Welt
Pocket



RETRO COLLECTION



Ladies Fit



Zipper on Outside Lower Leg



RETRO GRADE JACKET

229561	Adult	S-3XL	MSRP 68.60
229661	Youth	S-XL	MSRP 68.60
229761	Ladies	XS-2XL	MSRP 68.60

- Dry-Excel™ 100% polyester performance terry
- Ladies' fit on style 229761
- 3-piece mesh lined hood with spandex binding
- Raglan sleeves
- Front pockets
- Spandex bound cuff

AVAILABLE IN ADULT & LADIES ONLY



BLACK/
ORANGE
423

BLACK/
SCARLET
500

BLACK/
WHITE
420

GRAPHITE/
WHITE
R04

PURPLE/
WHITE
450

FOREST/
WHITE
436

MAROON/
WHITE
380



NAVY/
SCARLET
S20

NAVY/
WHITE
301

ROYAL/
WHITE
280

SCARLET/
WHITE
408



RETRO GRADE PANT

229562	Adult	S-3XL	MSRP 57.30
229662	Youth	S-XL	MSRP 57.30
229762	Ladies	XS-2XL	MSRP 57.30

- Dry-Excel™ 100% polyester performance terry
- Ladies' fit on style 229762
- Exposed brushed elastic waistband with inside drawcord
- Front pockets
- Back welt pocket
- Tapered leg

AVAILABLE IN ADULT & LADIES ONLY



BLACK/
WHITE
420

NAVY/
WHITE
301

ROYAL/
WHITE
280

GRAPHITE/
WHITE
R04

SCARLET/
WHITE
408

PURPLE/
WHITE
450

FOREST/
WHITE
436

MAROON/
WHITE
380



Ladies Fit



Zipper on
Outside
Lower Leg



CROSTOWN JACKET

NEW	223530	Adult	S-3XL	MSRP 42.00
	223630	Youth	S-L	MSRP 42.00
	223730	Ladies	S-2XL	MSRP 42.00

- Dry-Excel™ 100% polyester double-knit
- Dry-Excel™ 100% polyester mesh inserts
- Ladies' fit on style 223730
- Set-in sleeves
- Front zippered pockets
- Open bottom
- Dropped tail



BLACK/
BLACK
425

BLACK/
WHITE
420

GRAPHITE/
WHITE
RO4

NAVY/
WHITE
301

ROYAL/
WHITE
280

SCARLET/
WHITE
408

WHITE/
BLACK
226



CROSTOWN PANT

NEW	223531	Adult	S-3XL	MSRP 42.00
	223631	Youth	S-L	MSRP 42.00
	223731	Ladies	S-2XL	MSRP 42.00

- Dry-Excel™ 100% polyester double-knit
- Dry-Excel™ 100% polyester mesh inserts
- Ladies' fit on style 222731
- Covered elastic waistband with inside drawcord
- Side seam pockets
- Tapered leg



BLACK/
BLACK
425

BLACK/
WHITE
420

GRAPHITE/
WHITE
RO4

NAVY/
WHITE
301

ROYAL/
WHITE
280

SCARLET/
WHITE
408

WHITE/
BLACK
226



MEDALIST 2.0 COLLECTION

COORDINATING PULLOVER
4386/4388



Ladies Fit



Zipper on
Outside
Lower Leg

MEDALIST JACKET 2.0

4395	Adult	S-3XL	MSRP 40.60
4396	Youth	XS-L	MSRP 40.60
4397	Ladies	XS-2XL	MSRP 40.60

- Heavyweight 100% polyester matte brushed tricot
- Ladies' fit on style 4397
- Heat sealed label
- Set-in sleeves
- Front seam pockets
- Self-fabric cuffs
- Alternate pants 7726/7728, 7731/7732/7733



MEDALIST PANT 2.0

7760	Adult	S-3XL	MSRP 36.20
7761	Youth	XS-L	MSRP 36.20
7762	Ladies	XS-2XL	MSRP 36.20

- Heavyweight 100% polyester matte brushed tricot
- Ladies' fit on style 7762
- Heat sealed label
- Covered elastic waistband with inside drawcord
- Side seam pockets



Back Yoke



AVAILABLE
IN ADULT &
LADIES ONLY



IMPACT+



IMPACT+



SOCCER SOCKS

ATHLETIC SOCKS

CORE MULTI-SPORT SOCKS

NEW

IMPACT+ CHILL SOCCER SOCKS

329130 Large (10-13)
Medium (9-11)
Small (7-9)
MSRP 14.50

- Made from Repreve® 93% recycled polyester/6% rubber/1% other fibers
- Soil-release properties
- Knee-length sock with fold-down cuff
- Extra cushioning and support in areas of the foot and ankle that are susceptible to rubbing, impact or injury
- Arch compression reduces fatigue and aids circulation
- Left and right sock construction for a better fit

IMPACT+ SOCCER SOCKS

329120 Large (10-13)
Adult Medium (9-11)
Small (7-9)
MSRP 12.00

- 85% nylon/7% polyester/5% rubber/3% spandex
- Knee-length sock with fold-down cuff
- Extra cushioning and support in areas of the foot and ankle that are susceptible to rubbing, impact or injury
- Arch compression reduces fatigue and aids circulation

6031 Large (10-13)
Medium (9-11)
Small (7-9)
MSRP 8.30

- 80% acrylic/15% nylon/5% elastic
- Knee-length tube sock with fold-down cuff
- Fully cushioned foot

328030 Large (10-13)
Medium (9-11)
Small (7-9)
X-Small (5-7)
MSRP 7.20

- 80% acrylic/14% nylon/6% elastic
- Knee-length tube sock
- Fully-cushioned foot

6922 Large (10-13)
Medium (9-11)
Small (7-9)
X-Small (5-7)
MSRP 4.60

- 95% polyester/15% rubber
- Knee-length tube sock



BLACK/ GRAPHITE R17
DK GREEN/ BLACK 444
GRPHITE/ BLACK 172
MAROON/ BLACK 388



NAVY/ GRAPHITE S21
ROYAL/ BLACK 289
SCARLET/ BLACK 406
WHITE/ BLACK 226



BLACK/ WHITE/ GRAPHITE 355
DARK GREEN/ WHITE/ GRAPHITE 192
GRAPHITE/ WHITE/ BLACK 196
KELLY/ WHITE/ GRAPHITE 65E
MAROON/ WHITE/ GRAPHITE 392



NAVY/ WHITE/ GRAPHITE 372
ROYAL/ WHITE/ GRAPHITE 191
ROYAL/ ATHLETIC GOLD/ GRAPHITE 64E
SCARLET/ WHITE/ GRAPHITE G14
WHITE 005



BLACK 080
GOLD 025
KELLY 030
NAVY 065
ORANGE 029



PURPLE 050
RED 040
ROYAL 060
WHITE 005



ATHLETIC GOLD 595
BLACK 080
COL BLUE 089
DARK GREEN 035
GRAPHITE 059
KELLY 030



LIME 096
MAROON 745
NAVY 065
ORANGE 029
POWER BLUE 812
POWER PINK 809



POWER YELLOW 810
PURPLE 050
RASPBERRY 047
ROYAL 060
SCARLET 083
SILVER GREY 016



TEAL 063
VEGAS GOLD 023
WHITE 005



BLACK 080



Inside divider for shoes or damp items



Mesh ball holder fits volleyball, soccer or basketballs



Without mesh ball holder

Mesh ball holder fits volleyball, soccer or basketballs, & stashes away when not in use



Reinforced multiuse side pockets with pass-thru strap for bat or lacrosse stick



FREE FORM BACKPACK

327895 13" W x 19" H x 9"D MSRP 44.30

- 900-denier heavyweight 100% polyester with PU coating
- Matte PVC bottom and sides for durability
- Large main compartment for easy decoration
- Zippered pocket with brushed interior for valuables
- Two mesh side pockets
- Smooth finish top handle for comfort
- Padded back & shoulder straps
- Hidden key clip
- Internal zippered mesh valuables pocket



BLACK
O80



CARBON
HEATHER
E83



GRAPHITE
O59



NAVY
O65



ROYAL
O60



SCARLET
O83



ALL SPORT BACKPACK

327890 12"W x 18.5"H x 7"D MSRP 43.70

- 100% polyester heavy denier
- Large main interior compartment
- Front zipper pocket with deep, interior pouch holds shoes or accessories
- Side pouch pockets for water bottle with pass-thru for lacrosse stick or bat



BLACK/
GRAPHITE/
BLACK
Q92



GRAPHITE/
GRAPHITE/
BLACK
Q83



FOREST/
GRAPHITE/
BLACK
Q88



MAROON/
GRAPHITE/
BLACK
Q89



NAVY/
GRAPHITE/
BLACK
Q93



ORANGE/
GRAPHITE/
BLACK
Q90



PURPLE/
GRAPHITE/
BLACK
Q91



ROYAL/
GRAPHITE/
BLACK
Q84



SCARLET/
GRAPHITE/
BLACK
Q86



NEW

UNITED BACKPACK

327930 11.5"W x 19"H x 9.5"D MSRP 62.90

- 600-denier polyester with PVC coating
- 210-denier nylon with PVC coating
- Large main interior compartment with two corded zipper pulls
- Large front ventilated compartment with two corded zipper pulls
- Zippered pocket with brushed interior for valuables
- Front pocket with corded zipper pull with hidden inside mesh ball holder that fits Volleyball, Soccer or Basketballs
- Two mesh side pockets
- Adjustable buckles on sides to secure baseball bat
- Internal zippered mesh valuables pocket
- Key clip inside main compartment
- Padded back for support and comfort
- Web handle at top of backpack
- Adjustable padded shoulder straps



BLACK
080

GRAPHITE/
BLACK
172

NAVY/
BLACK
308



PLAYER BACKPACK

327850 18"W x 17"H x 9"D MSRP 39.40

- Heavy duty 600-denier polyester with soft PVC backing
- Adjustable padded shoulder straps
- Hand strap



ATHLETIC
GOLD/
BLACK/
WHITE
657

BLACK/
BLACK/
WHITE
420

FOREST/
BLACK/
WHITE
148

GRAPHITE/
BLACK/
WHITE
U73

MAROON/
BLACK/
WHITE
524



NAVY/
BLACK/
WHITE
311

ORANGE/
BLACK/
WHITE
322

PURPLE/
BLACK/
WHITE
497

ROYAL/
BLACK/
WHITE
526

SCARLET/
BLACK/
WHITE
952

Mesh paneled
zippered
interior ball
compartment

Mesh ball
holder fits
volleyball,
soccer or
basketballs



Two zippered side
compartments
with mesh panels





MOMENTUM TEAM COLLECTION



MOMENTUM TEAM TEE

223501 Adult S-3XL MSRP 15.90
4XL-6XL in select colors

223601 Youth XXS-XL MSRP 15.90

223701 Ladies S-3XL MSRP 15.90

- Dry-Excel™ 100% polyester interlock smooth knit with color secure® technology that helps prevent dye migration
- Ladies' Fit on style 223701
- Tag-free label
- Contrast color V-neck on Ladies
- Garment protects against the sun with 45+ UPF
- Set-in sleeves

AVAILABLE IN ADULT 4XL-6XL



BLACK/
IRON
62U

BLACK/
WHITE
420

NAVY/
WHITE
301

ROYAL/
WHITE
280

SCARLET/
BLACK
406

WHITE/
IRON
61U

AVAILABLE IN ADULT
S-3XL & YOUTH



DK GREEN/
BLACK
444

ORANGE/
WHITE
320

AVAILABLE IN ADULT
S-3XL & LADIES



COLUMBIA
BLUE/
WHITE
293

AVAILABLE IN ADULT S-3XL



GOLD/
WHITE
245

KELLY/
WHITE
340

ROYAL/
GOLD
281

SCARLET/
NAVY
W86

VEGAS GOLD/
BLACK
252

AVAILABLE IN ADULT S-3XL, YOUTH & LADIES



IRON/
WHITE
99D

MAROON/
BLACK
388

PURPLE/
BLACK
496

ROYAL/
BLACK
289

SCARLET/
WHITE
408



POWERED BY
COOLCORE®



NEW

ESSENTIAL TEE POWERED BY COOLCORE®

222136	Adult	S-3XL	MSRP 18.40
222236	Youth	S-XL	MSRP 18.40
222336	Ladies	XS-2XL	MSRP 18.40

- 88% polyester/12% elastane Coolcore® fabric with color secure® technology that helps prevent dye migration
- Garment protects against the sun with 50+ UPF
- Tag-free label
- Crew neck
- Set-in sleeves with rolled forward shoulder seam



ATHLETIC GREY 009 BLACK 080 COL BLUE 089 DK GREEN 035



IRON 98D MAROON 745 NAVY 065 OLIVE 039



PURPLE 747 ROYAL 060 SCARLET 083 WHITE 005



Non-branded tagless label



NEXGEN WICKING TEE

790	Adult	S-3XL	MSRP 7.20
		4XL in select colors	
791	Youth	XS-XL	MSRP 7.20
1790	Ladies	XS-3XL	MSRP 7.20

- 100% polyester wicking knit with color secure® technology that helps prevent dye migration
- Ladies' fit on style 1790
- Non-branded tag-free label
- Set-in sleeves
- Safety Yellow is ANSI certified

AVAILABLE IN ADULT 4XL



BLACK 080 NAVY 065 ROYAL 060 SCARLET 083 SILVER 099 WHITE 005

AVAILABLE IN ADULT & YOUTH ONLY



OLIVE 039 TEAL 063 ELECTRIC ORANGE 79N VEGAS GOLD 023 COYOTE 208

AVAILABLE IN ADULT ONLY



MAROON 745



COLUMBIA BLUE 089 DARK GREEN 035 GOLD 025 GRAPHITE 059 KELLY 030 MAROON 745

AVAILABLE IN ADULT & LADIES ONLY



ORANGE 029 POWER BLUE 812 POWER PINK 809 PURPLE 747 SAFETY YELLOW* 243

*SAFETY YELLOW IS ANSI CERTIFIED



MOMENTUM COLLECTION



MOMENTUM TEE

222818	Adult	S-4XL	MSRP 11.00
		5XL & 6XL in select colors	
222819	Youth	XXS-XL	MSRP 11.00
222820	Ladies	S-3XL	MSRP 11.00

- Dry-Excel™ 100% polyester interlock smooth knit with color secure® technology that helps prevent dye migration
- Ladies' fit on 222820
- Tag-free label
- Garment protects against the sun with 45+ UPF
- Set-in sleeves

AVAILABLE IN ADULT 5XL-6XL



BLACK 080 GRAPHITE 059 NAVY 065 ROYAL 060 SCARLET 083 SILVER 099 WHITE 005

AVAILABLE IN ADULT/YOUTH/LADIES ONLY



CARDINAL J36 DARK GREEN 035 ELECTRIC ORANGE 79N KELLY 030 VEGAS GOLD 023



COLUMBIA BLUE 089 ELECTRIC YELLOW T52 GOLD 025 LIME 096 MAROON 745 ORANGE 029

AVAILABLE IN ADULT & YOUTH ONLY



POWER BLUE 812 POWER PINK 809 PURPLE 747 TEAL 063 SAFETY YELLOW 243 OLIVE 039



MOMENTUM COLLECTION



NEW

MOMENTUM SHORTS

223522	Adult	S-3XL	MSRP 20.00
223622	Youth	S-XL	MSRP 20.00
223722	Ladies	S-3XL	MSRP 20.00

- Dry-Excel™ 100% polyester interlock smooth knit with color secure® technology that helps prevent dye migration
- Garment protects against the sun with 45+ UPF
- Tag-free label
- 2-inch brushed back elastic waistband with inside drawcord
- Side seam pockets
- Side vents



6-inch
inseam
(Youth
inseam
graded)



5-inch
inseam

Ladies Fit



BLACK
080



GRAPHITE
059



NAVY
065



ROYAL
060



SCARLET
083



SILVER
099





SCRIMMAGE VEST

321200	Adult	One Size	MSRP 4.80
321201	Youth	XS	MSRP 4.80
321201	Youth	One Size	MSRP 4.80

- 100% polyester tricot mesh
- Improved fit, longer length



ATHLETIC GOLD
595

LIME
096

ROYAL
060

SCARLET
083



OCTANE SHORTS

1425	Adult	S-3XL	MSRP 8.40
1426	Youth	XXS-L	MSRP 8.40

- 100% polyester wicking knit
- Full-cut
- Tag-free label
- Covered elastic waistband with inside drawcord
- 7-inch inseam
- Youth inseam graded



BLACK
080

RED
040

ROYAL
060

COLUMBIA
BLUE
089

NAVY
065

ORANGE
029

MAROON*
045



GOLD
025

PURPLE*
050

KELLY
030

DARK
GREEN
035

SILVER
GREY
016

GRAPHITE
059

* MAROON & PURPLE SHADES CAN VARY BY BRAND, PLEASE CONTACT OUR CUSTOMER CARE WITH QUESTIONS



HIGH FIVE

AUGUSTA
SPORTSWEAR BRANDS
augustasportswear.com